

Copyright © 2025 Aroot Co., Ltd. All right reserved.
All specifications and designs are subject to change without notice.

06/2025
www.miniprinter.com



sewoo

Aroot CO., Ltd.
Republic of Korea [Head Office / R&D Center]
28-6, Gajangsaneopdong-ro, Osan-si, Gyeonggi-do, 18103, Republic of Korea
T. +82-31-8077-5000 F. +82-31-624-5310 E. sales@miniprinter.com

sewoo



POS SYSTEM PRODUCT GUIDE BOOK

POS System
Scanner
Cash Drawer

Your Complete Hardware
Solution Partner,
SEWOO



YOUR COMPLETE HARDWARE SOLUTION PARTNER

RETAIL

SEWOO Printing Solutions are widely used in various distribution sectors such as department stores, hypermarkets, and speciality retail stores for printing purposes including receipts, price tags (labels), and coupons.

TOURISM, DINING

SEWOO Printing Solutions are widely used in various sectors of the tourism and food service industry, including hotels, restaurants, and kitchens, for printing purposes such as receipts, kitchen printers, order labels, and ingredient labels.

TRANSPORTATION, LOGISTIC

SEWOO Printing Solutions are widely used in various sectors of the transportation and logistics industry, including warehouses, logistics centers, railway stations, and airports, for printing purposes such as parcel and logistics delivery receipts, in-flight duty-free receipts, baggage labels, notices, and airline bus terminal tickets.

HEALTHCARE

SEWOO Printing Solutions are widely used in various sectors of the healthcare industry, including hospitals, pharmacies, and medical research laboratories, for printing purposes such as patient information, examination results, symptoms, and prescription labels.

MANUFACTURING

SEWOO Printing Solutions are widely used in various sectors of the manufacturing industry, including warehouses, factories, and production sites, for printing purposes such as invoices and receipts, inventory management labels, product information labels, packaging labels, incoming/management labels, and component tag printing.

PUBLIC SECTOR

SEWOO Printing Solutions are widely used in various sectors of the public domain, including public institutions, police stations, military, and libraries, for printing purposes such as parking and traffic violation receipts/labels, and book location tags.

ON-SITE SERVICES

SEWOO Printing Solutions are widely used in various sectors of on-site services, including delivery shops and field service businesses, for printing purposes such as delivery receipts, on-site sales, and service receipts.



CONTENTS



POS System

Traditional Product
Foldable Products

Scanner

Wired Scanner
Wireless Scanner
Wearable Scanner
OCR Scanner

Cash Drawer

S330E / S415H

POS System

SEWOO POS System offer a great opportunity to attract big customers.

SEWOO POS System offer high performance and adaptability.

To satisfy service demands, retail and hospitality industry require high-performance POS systems with flexible mount installation options to suit diverse application environments. Take advantage of the opportunity to big customers at POS system with SEWOO products. The latest POS system makes sure of its superior configurability, scalability, and power.

Application

High-performance POS system for a wide range of retail environments



Key feature



15" POS System, NBP-150

- Larger and clearer screen
- 1366 x 768 / 1920 x 1080P (optional)
- Display : 180 degrees vertical, high brightness
- A+ Grade touch screen
- Scratch-resistant and wear-resistant high-definition picture quality



Smart and Portable POS System, NBP-150/156 Flip

- Easy design to detach
- 7mm ultra-thin screen
- High performance processor
- Foldable and rotatable design
- All-aluminum design available in three colors
- Available customer display with just one cable
- Fanless operation with waved back cover design

Foldable Products



NBP-156FLIP

PRODUCT SPEC

SYSTEM CONFIGURATION	CPU
	OS
	RAM
	SSD
	RESOLUTION
	LCD
	TOUCH
	CUSTOMER DISPLAY
	POWER
	WEIGHT
STRUCTURAL PARAMETERS	PACKING SIZE
	INTERFACE
ACCESSORIES	OPTIONAL
ENVIRONMENTAL PARAMETER	WORKING TEMPERATURE
	WORKING HUMIDITY
	STORAGE TEMPERATURE
	STORAGE HUMIDITY

Windows : J6412 Quad core 2.0G, Intel N95: Quad core 1.7GHz- 3.4Ghz, i3-12th, i5-12th Android : RK3568 Quad core Cortex-A55 up to 2.0GHz
Windows : Windows 10 IoT Enterprise testing version Windows 11 IoT Enterprise testing version Android : Android 11/Android 13
Windows : DDR4 4GB / 8GB / 16GB Android : 2GB RAM
Windows : m.2 128GB / 256GB / 512GB Android : 32GB / 128GB ROM
1366*768 P
15.6 inch LED
15.6 inch capacitive touch screen
2*20 VFD/ 11.6 inch customer display (1366*768, no touch)
12V/5A
1pcs: 3.8KG
1pcs: 43*18.5*42cm
Windows : J6412: RS232(2) ,USB(5), RJ45(1), HDMI(1), RJ11(2), HP_JACK(1), Only EDP (only for 2nd display)(1) N95: RS232(2), USB(5), RJ45(1), HDMI(1), RJ11(1) , Only EDP (only for 2nd display)(1), HP_JACK(1) Android : RK3568 : UART7(com) : (2), RJ45(Ethernet) (1), USB : (5), TF_CARD(tf card) : (1), SIM card : (1), PHONE JACK : (1), MICROPHONE : (1), RJ11 : (1) i3-12th, i5-12th: IO panel is same. RS232(2) ,USB(5), RJ45(1), HDMI(1), RJ11(2), HP_JACK(1), Only EDP(only for 2nd display) (1)
Windows : MSR, Speaker*1, WiFi+BT Android : MSR, Speaker*1
0°C - 40°C
20% - 80%
-20°C - 60°C
20% - 80%



NBP-150FLIP

Windows : Intel N95: Quad core 1.7GHz- 3.4Ghz, J6412 Quad core 2.0G, i3-12th, i5-12th
Windows : Windows 10 IoT Enterprise testing version
Windows : DDR4 4GB / 8GB / 16GB
Windows : m.2 128GB / 256GB / 512GB
1024 * 768 P
15 inch LED
15 inch capacitive touch screen
2*20 VFD/ 11.6 inch customer display (1366*768, no touch)
12V/5A
1pcs: 3.8KG
1pcs: 42*19*42cm
Windows : J6412: RS232(2) ,USB(5), RJ45(1), HDMI(1), RJ11(2), HP_JACK(1), Only EDP (only for 2nd display)(1) N95: RS232(2), USB(5), RJ45(1), HDMI(1), RJ11(1), Only EDP (only for 2nd display)(1), HP_JACK(1) i3-12th, i5-12th: IO panel is same. RS232(2) ,USB(5), RJ45(1), HDMI(1), RJ11(2), HP_JACK(1), Only EDP(only for 2nd display) (1)
Windows : MSR, Speaker*1, WiFi+BT
0°C - 40°C
20% - 80%
-20°C - 60°C
20% - 80%

Traditional Product



NBP-150

PRODUCT SPEC

SYSTEM CONFIGURATION	CPU
	OS
	MAIN
	LCD
	RESOLUTION
	CUSTOMER DISPLAY
	TOUCH SCREEN
	SECONDARY DISPLAY
	POWER
	INTERFACE
STRUCTURAL PARAMETERS	SIZE
	WEIGHT
CERTIFICATIONS	RELIABILITY
ACCESSORIES	OPTIONAL
ENVIRONMENTAL PARAMETER	WORKING TEMPERATURE
	WORKING HUMIDITY
	STORAGE TEMPERATURE
	STORAGE HUMIDITY

- Intel J4125 : Intel® Celeron® J4125, Quad Core 2.0Ghz [Fanless] - Intel J6412 : Intel® Celeron® J6412, Quad Core 2.0Ghz [Fanless] - Intel i3 : Intel® Core® i3-5th/ 10th/ 11th - Intel i5 : Intel® Core® i5-5th/ 10th/ 11th
Supporting System : Windows 10 IoT Enterprise
Memory : DDR4 4GB (Option: 8GB) Storage : 2.5" SATA 128G SSD (Option: 256G/ 512G)
15" TFT LED
1024 x 768
VFD 2 line x 20 characters / LCD 2 line x 20 characters / LED Display characters : Single line display Support 8 number only
15" Bezel-Free True-Flat Protective Capacitive Touch Screen
10.1" IPS LCD, 15" TFT LCD
- DC-IN : Input AC 100-240V / 50-60hz, Output DC 12V/ 5A
- Intel J4125 : VGA (1), RS232 (2), RJ45 (1), USB (6), RJ11 (1), HDMI(1) - Intel J6412 : VGA (1), RS232 (3), RJ45 (1), USB (6), RJ11 (1)or VGA(1), HDMI (1), RS232(2), RJ45(1), USB(6), RJ11(1) - Intel i3/i5 : VGA (1), RS232 (2), RJ45 (1), USB (6), HDMI (1) - Audio : 1 * Mic-in, 1 * Line-out
220mm x 190mm x 350mm (WxDxH)
7kg
CE, RoHS, FCC
- MSR : ISO 1,2,3 Tracks - Button : Dallas Key RS232 I/F - Finger Reader
0°C - 40°C
20% - 80%
-20°C - 60°C
20% - 80%

Scanner

SEWOO Scanners streamline workflows with reliable performance and enhanced productivity.

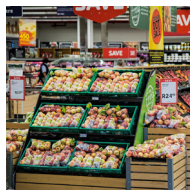
SEWOO Scanners offer fast performance and quality imaging.

To satisfy service demands, retail and hospitality industry require high-performance POS systems with flexible mount installation options to suit diverse application environments. Take advantage of the opportunity to big customers at POS system with SEWOO products. The latest POS system makes sure of its superior configurability, scalability, and power.

Application



Store



Supermarkets



Restaurant



Pharmacy

1D/2D Wired (Pistol type)



NBS-SL856B

1D/2D Omni Wired (Desktop type)



NBS-8202S

PRODUCT SPEC

DATA CAPTURE	LIGHT SOURCE
	IMAGE SIZE
	RESOLUTION@
	SCANNING SPEED
	DEPTH OF SCAN FIELD
	PRINT CONTRAST
	INDICATOR
	SCAN MODE
	SCAN ANGLE
	INTERFACE
PHYSICAL	WIRELESS TRANSMISSION DISTANCE
	MATERIALS
	DIMENSION (LxWxH)
	WEIGHT
	VOLTAGE
	BATTERY
	TFT COLOR SCREEN
	CPU
	FLASH MEMORY
	AMBIENT LIGHT
ENVIRONMENTAL	WORKING CURRENT
	STAND-BY CURRENT
	TEMPERATURE (OPERATING)
	TEMPERATURE (STORAGE)
	HUMIDITY
	DECODING CAPABILITY
	DROP
	IP
	ACCESSORY
	STANDARD

Aiming: 617 nm LED; illumination : 3500K LED
640 × 480 pixels
> 2mil
60fps
Code 39 (20mil) : 20-370mm, Code 39 (5.13mil) : 30-120mm, PDF (6.88mil) : 10-170mm, DM (10mil) : 20-170mm, UPC-A 100% (13 mil) : 20-360mm, QR (20 mil) : 0-330m
25% minimum reflective difference
Buzzer, LED, Vibration
Pitch ±65° Yaw 360° Roll ±60°
USB, RS232, BT 5.0
200M
ABS+PC
180 x 110 x 85 mm
433g(Inclu.cable)
DC 5V ± 0.5V
2600mAh
-
ARM 32
600KB
100,000 Lux
350mA
110mA
0° to 50° C
-40° to 70° C
0% to 95%
Codabar, Code11, Code39, Code32, Interleaved 2 of 5, Industrial 2 of 5, Matrix 2 of 5, Code93, Code128, GS1-128, UPC-A, UPC-E, EAN 8, EAN 13, GS1 DataBar, RSS14, GS1 DataBar Limited, GS1 DataBar Expanded, etc.
PDF417, Micro PDF417, QR Code, Micro QR, Data Matrix, Aztec Code
1.5M
-
USB Cable

Red LED (Lighting) Color Temperature 650nm LED
1280× 800 pixels
> 3mil
60fps
5-280mm(13mil UPC/EAN 100%, PCS=90%)
15%
Tone & Volume adjustable
Continuous
Deflection 360° Inclination ±65° Rotation ±60°
USB-HID, USB-VCP, RS232
-
ABS+PC
98 x 98 x152 mm
350g (Inclu.cable)
DC 5V ± 0.5V
-
-
ARM 32
-
0~5000Lux (fluorescence), 0~100,000 Lux (sunlight)
<450mA
<236mA
-10°C ~ 50°C
-20°C ~ 60°C
5% to 95%
Codabar, Code11, Code39, Code32, Interleaved 2 of 5, Industrial 2 of 5, Matrix 2 of 5, Code93, Code128, GS1-128, UPC-A, UPC-E, EAN 8, EAN 13, GS1 DataBar, RSS14, GS1 DataBar Limited, GS1 DataBar Expanded, etc.
PDF417, Micro PDF417, QR Code, Micro QR, Data Matrix, Aztec Code
1.5M
IP54
USB Cable

Wearable

KIOSK Embedded



NBS-SL856B



NBS-8202S

PRODUCT SPEC

DATA CAPTURE	LIGHT SOURCE	Red LED	Red LED
	IMAGE SIZE	640 × 480 pixels	640 × 480 pixels
	RESOLUTION	4mil(Code 39, PCS 0.9)	> 3mil
	SCANNING SPEED	200 times/s	60fps
	DEPTH OF SCAN FIELD	13mil EAN 13 more than 15cm	60-360mm(13mil PCS=90%)
	PRINT CONTRAST	25% minimum reflective difference	15%
	INDICATOR	Beep, LED, Vibration	-
	SCAN MODE	Trig / Common / Continuous / Auto Sensing Mode	Manual & Automatic & Continuous
	SCAN ANGLE	Pitch ±55° Yaw 360° Roll ±55°	Deflection 360° Inclination ±65° Rotation ±60°
	INTERFACE	Bluetooth Class 4.2 (Auto-power on), USB HID Keyboard, USB COM	USB-HID, USB-VCP, TTL
PHYSICAL	WIRELESS TRANSMISSION DISTANCE	Bluetooth :30 meters 2.4G:80 meters	-
	MATERIALS	ABS+PC	ABS+PC
	DIMENSION (LxWxH)	52 x 48 x 32 mm	21.3 X 13.5 X 11.5 mm
	WEIGHT	42g(with battery)	3.3g
	VOLTAGE	DC 5V ± 0.5V	DC 3.3V
	BATTERY	500mAh (built-in); Max 14000 scan /full charge	-
	TFT COLOR SCREEN	YES	-
	CPU	ARM 32	ARM 32
	FLASH MEMORY	16M	-
	AMBIENT LIGHT	0~80000LUX	0~5000Lux (fluorescence), 0~100,000 Lux (sunlight)
ENVIRONMENTAL	WORKING CURRENT	160mA	178mA
	STAND-BY CURRENT	20uA	< 1uA
	TEMPERATURE (OPERATING)	-10°C ~ 50°C	-10°C ~ 50°C
	TEMPERATURE (STORAGE)	-10°C ~ 50°C	-20°C ~ 60°C
	HUMIDITY	5% to 95%	5% to 95%
	DECODING CAPABILITY 1D	Codabar, Code11, Code39, Code32, Interleaved 2 of 5, Industrial 2 of 5, Matrix 2 of 5, Code93, Code128, GS1-128, UPC-A, UPC-E, EAN 8, EAN 13, GS1 DataBar, RSS14, GS1 DataBar Limited, GS1 DataBar Expanded, etc.	Codabar, Code11, Code39, Code32, Interleaved 2 of 5, Industrial 2 of 5, Matrix 2 of 5, Code93, Code128, GS1-128, UPC-A, UPC-E, EAN 8, EAN 13, GS1 DataBar, RSS14, GS1 DataBar Limited, GS1 DataBar Expanded, etc.
	2D	PDF417, Micro PDF417, QR Code, Micro QR, Data Matrix, Aztec Code	PDF417, Micro PDF417, QR Code, Micro QR, Data Matrix, Aztec Code
	DROP	1.5M	1.5M
	IP	IP42	-
	ACCESSORY	USB cable (type C)	Flat Cable

2D Wireless

2D Scan Module

**NBS-8200II
(w/o Stand)****NBS-8250II
(with Stand)****NBS-8550C
(2.4G Cradle)****NBS-8550D
(2.4G Dongle)****NBS-8202K****PRODUCT SPEC**

DATA CAPTURE	LIGHT SOURCE	White LED (Lighting) RED aiming light	White LED (Lighting) RED aiming light	White LED (Lighting) RED aiming light
	IMAGE SIZE	640 × 480 pixels	640 × 480 pixels	640 × 480 pixels
	RESOLUTION	> 3mil	> 4mil	> 5mil
	SCANNING SPEED	60fps	60 fps	30fps
	SYSTEM SUPPORTED@	-	Android/Windows/Linux/IOS	30fps
	DEPTH OF SCAN FIELD	60~360mm (13mil PCS90%)	50~390mm(13mil code39)	60~360mm (13mil PCS90%)
	PRINT CONTRAST	-	25% minimum reflective difference	-
	INDICATOR	LED Indicator and Buzzer	LED indicator light, buzzer	Buzzer
	SCAN MODE	Manual & Automatic	Trig / Common / Continuous / Auto Sensing Mode	Sensing Scan
	SCAN ANGLE	-	rotate 360°, inclination 65°, elevation 60°	Rotate 360°, Dip 65°, Elevation 60°
PHYSICAL	VIEW ANGLE	-	-	Horizontal 70°, Vertical 50°
	INTERFACE	USB-HID, USB-VCP, RS232	USB / USB-VCP	RS232,USB
	WIRELESS TRANSMISSION DISTANCE	-	Bluetooth :30 meters 2.4G:80 meters	-
	MATERIALS	ABS+TPU	ABS+PC	ABS+PC
	DIMENSION (LxWxH)	112.5 × 81.5 × 204 mm	14.7 × 90.6 × 62.8 mm 14.7 × 90.6 × 62.8 mm	65.1 × 61.6 × 33mm
	WEIGHT	185g	Receiver: 15 × 6 × 19 mm Scanner:185g Receiver: 1.6g	185g
	VOLTAGE	DC 3.6V ~ 5.5V	Charging base: 165.7 × 71.1 × 52.6 Scanner : 188.4g Charging base : 318.3g	5 VDC±5%
	BATTERY	-	DC 5V Replaceable & Rechargeable lithium battery, 2600mAh	-
	CPU	32bit ARM	32bit ARM	32bit MIPS @1G Hz
	AMBIENT LIGHT	0 ~ 5000Lux(fluorescent light), 0 ~ 100,000Lux(daylight)	0~5000Lux(fluorescent), 0~100,000Lux(Sunlight)	0 - 5000Lux(fluorescent light) 0 - 100,000Lux(day light)
ENVIRONMENTAL	WORKING CURRENT	142mA	250mah	108mA (Typical value), 114mA (Max value)
	STAND-BY CURRENT	42mA	<90mA	50mA
	TEMPERATURE (OPERATING)	-10°C ~ 50°C	-10°C ~ 50°C	-20°C~60°C
	TEMPERATURE (STORAGE)	-20°C ~ 60°C	-10°C ~ 50°C	-40°C - 70°C
	HUMIDITY	5% ~ 95%(non-condensing)	5% ~ 95%(relative humidity non-condensing)	5% ~ 95%(relative humidity non-condensing)
	DECODING CAPABILITY 1D	Codabar, Code11, Code39, Code32, Interleaved 2 of 5, Industrial 2 of 5, Matrix 2 of 5, Code93, Code128, GS1-128, UPC-A, UPC-E, EAN 8, EAN 13, GS1 DataBar, RSS14, GS1 DataBar Limited, GS1 DataBar Expanded, etc.	Codabar, Code11, Code39, Code32, Interleaved 2 of 5, Industrial 2 of 5, Matrix 2 of 5, Code93, Code128, GS1-128, UPC-A, UPC-E, EAN 8, EAN 13, GS1 DataBar(RSS14), GS1 DataBar Limited, GS1 DataBar Expanded, etc	EAN-13, EAN-8, UPC-A, UPC-E, ISSN, ISBN, Codabar, Code 128 (FNC1, FNC2, FNC3), Code 93, ITF-6, ITF-14, Interleaved 2 of 5, Industrial 2 of 5, Standard 2 of 5, Matrix 2 of 5, GS1 Databar (RSS-Expand, RSS-Limited, RSS-14), Code 39(Code 39 FULL ASCII), Code 11, MSI-Plessey, Plessey, etc
	2D	PDF417, Micro PDF417, QR Code, Micro QR, Data Matrix, Aztec Code	PDF417, Micro PDF417, QR Code, Micro QR, Data Matrix, Aztec Code	PDF417, Data Matrix, QR Code, etc
	IP	IP54	-	IP54
	ACCESSORY	STANDARD	USB cable (type C)	-

Cash Drawer

SEWOO Cash Drawer ensures secure, efficient cash management with POS integration.

SEWOO Scanners offer fast performance and quality imaging.

SEWOO Cash Drawer offers secure and efficient cash management across various industries, from retail and hospitality to service businesses.

Seamlessly integrated with POS systems, it ensures fast and accurate transactions, while its durable build and advanced security features minimize risks of theft and loss.

- Accurate Reconciliation: Organized cash and coin compartments reduce transaction errors.
- Ease of Use: Intuitive and quick operation for an efficient payment process.
- Maximum Reliability: Robust design and locking mechanisms for enhanced security.

Upgrade your business operations with Cash Drawer, the indispensable tool for managing cash in any setting!

Application



Retail



Supermarkets



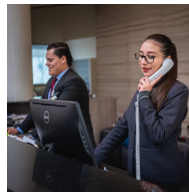
Restaurant



Pharmacy



Transportation



Hospitality



Entertainment



Public Offices

Cash Drawer



S330E

PRODUCT SPEC

CASH DRAWER CHARACTERISTICS	COLOR
BILL TRAY/COIN TRAY	4 Bill + 8 Coin One part bill tray can removable
BILL LENGTH	171mm
BILL WIDTH	Fixed as : 78/73/73/70
BILL HOLDERS	Metal Wire Gripper
CASING	Robust all steel construction
INNER DRAWER	ABS plastic drawer
MEDIA SLOT	Plastic panel, one media slot
ROLLERS	Heavy duty plastic rollers
KEY LOCK	Three-position Key Lock (2keys)
SOLENOID	24V Compatible
EMERGENCY OPENER	Optional
PHYSICAL CHARACTERISTICS	DIMENSION
	335 x 368 x 80 (mm)
WEIGHT	Net weight : 3.6kg
INTERFACES	I/O INTERFACE
	RJ12 as Standard



S415H

PRODUCT SPEC

PERFORMANCE CHARACTERISTICS	COLOR
BILL TRAY/COIN TRAY	Black/White/Gray
INNER DRAWER	4 Bill + 8 Coin
BILL HOLDERS	Plastic
ROLLERS	Metal Wire Gripper
MEDIA SLOT	Heavy Duty Plastic Rollers
MICRO SWITCH/SENSOR	Single Slot / Double Slot
CABLE CONNECTION	Open by driver signal to the solenoid (optional)
EMERGENCY OPNER	External Cable on Rear / Bottom (optional)
CABLE LENGTH	Emergent Release Lever on The Chassis
SOLENOID	1.1 Meters
PHYSICAL CHARACTERISTICS	DIMENSION
	24V Compatible
	410 x 415 x 100 (mm)
	475 x 460 x 170 (mm)
	345 x 186 x 59 (mm)
	345 x 125 x 40.5 (mm)
	5.2kg
INTERFACES	I/O INTERFACE
	Standard : RJ12 Optional : USB

